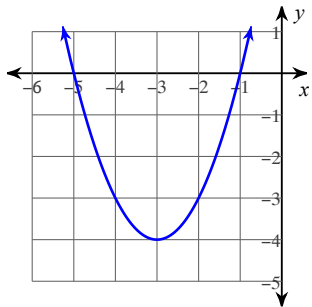
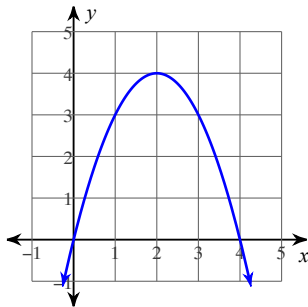


Answers to 6.2 Switching Forms and Quadratic Applications

1)

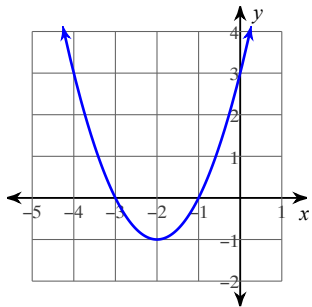


3)

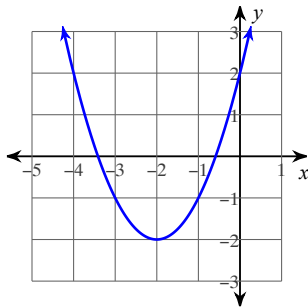


5) $y = -2x^2 + 12x + 14$

7)



9)



11) $y = (x + 2)^2 - 9$

- 13) a. 256 ft
 b. 2 seconds
 c. 252 seconds
 d. 6 seconds

- 15) a. 25 feet
 b. 0.25 seconds
 c. 1.5 seconds

- 17) a. 0.5 seconds
 b. about 480 feet
 c. 6 seconds
 d. about 425 feet