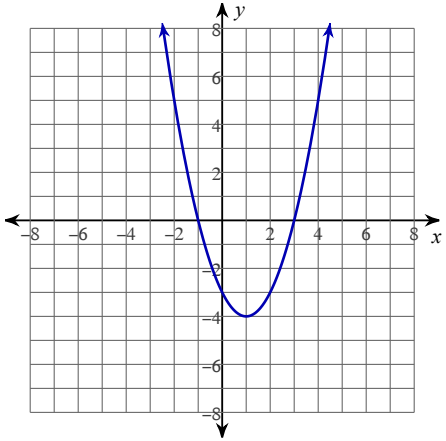


### 5.6 Writing Equations from Graphs

Write the equation of the graph in each of its forms.

1)



2) a. Vertex form:

b. Intercept form:

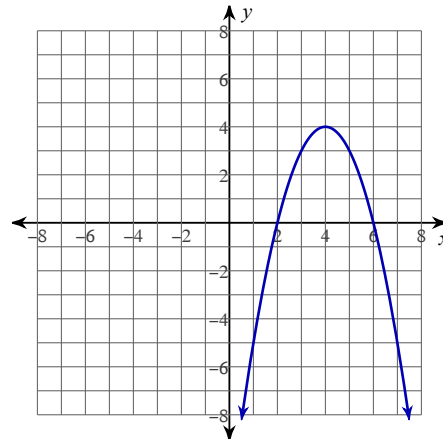
c. Standard form:

3) a. Vertex form:

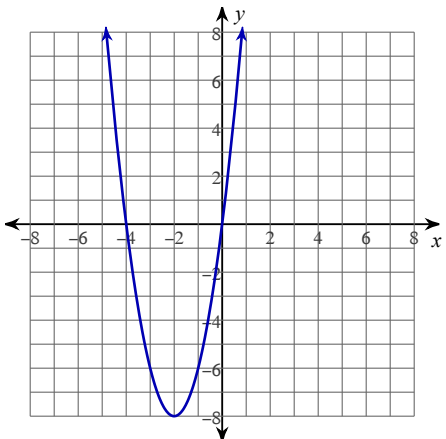
b. Intercept form:

c. Standard form:

4)



5)



6) a. Vertex form:

b. Intercept form:

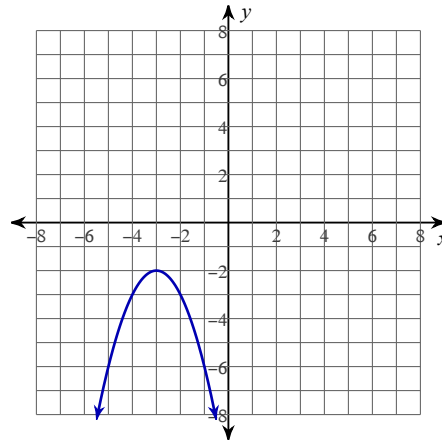
c. Standard form:

7) a. Vertex form:

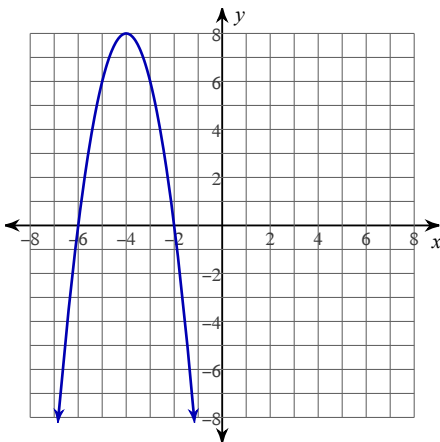
b. Intercept form:

c. Standard form:

8)



9)



10) a. Vertex form:

b. Intercept form:

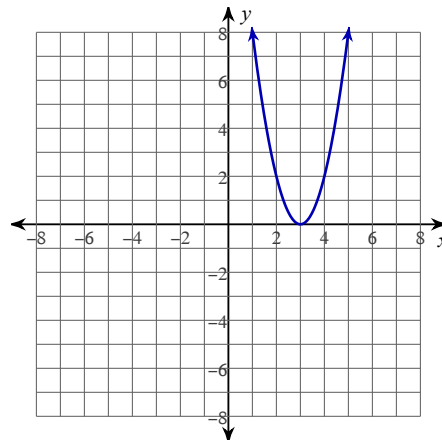
c. Standard form:

11) a. Vertex form:

b. Intercept form:

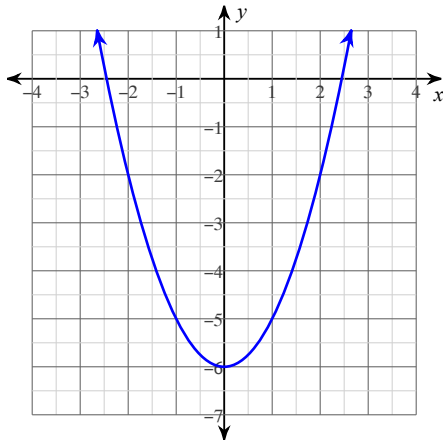
c. Standard form:

12)



Write the equation in any form. Then identify the key features. Approximate where necessary.

13)



14) a. x-intercept(s):

b. y-intercept:

c. axis of symmetry:

d. vertex:

e. Max/Min Value:

f. Direction of Opening

g. Domain:

h. Range:

i. Increasing:

j. Decreasing:

k. Positive:

l. Negative:

m. End behavior:

15) a. x-intercept(s):

b. y-intercept:

c. axis of symmetry:

d. vertex:

e. Max/Min Value:

f. Direction of Opening

g. Domain:

h. Range:

i. Increasing:

j. Decreasing:

k. Positive:

l. Negative:

m. End behavior:

16)

